

1080p / 1080i

# Real Time, Full Screen HD Video

## RealView™ HD-210D HD Microscope Camera

Real Time High Definition  
Single Chip CMOS Camera

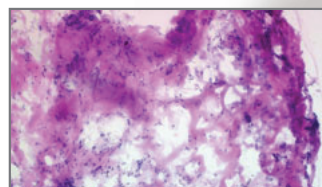
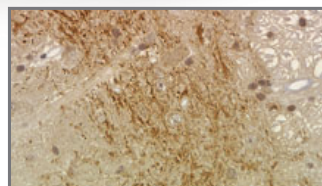


HD-210D

The RealView high definition color microscope camera is the premier solution to viewing highly detailed images in a real time live mode. The high frame rate provides smooth motion while the 2.1 megapixel sensor provides a sharp, true full screen HD image.

The RealView camera is especially effective in settings such as tumor review boards, clinical rounds, pathology labs, teaching environments and industrial inspection.

Combine with the Real View™ HD Magic Box for an unparalleled imaging capture and review system.



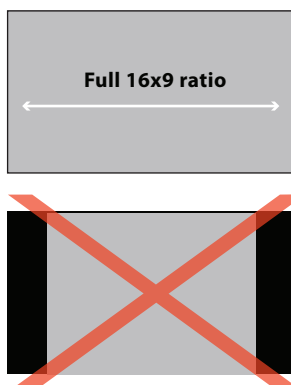
Sample Images from the RealView™ HD-210D



HD-210D Back Panel

### Full Screen HD Image

- The HD-210 outputs a true 16x9 ratio HD image for full screen display
- No vertical compression or horizontal stretching
- No black bars and no cropping of image
- Matches your monitor's HD specs for a true pixel to pixel image



### Real Time Viewing

- The HD-210 outputs images at a high frame rate (60 FPS) for smooth real time live motion
- Selectable between 1080p/60, and 1080i/30
- Connects simply with DVI cable or HDMI converter cable
- No PC or software required

**60** FPS  
frame rate



**REAL TIME, FULL SCREEN HD VIDEO**

# RealView™ HD-210D HD Microscope Camera

Real Time High Definition  
Single Chip CMOS  
Microscope Camera



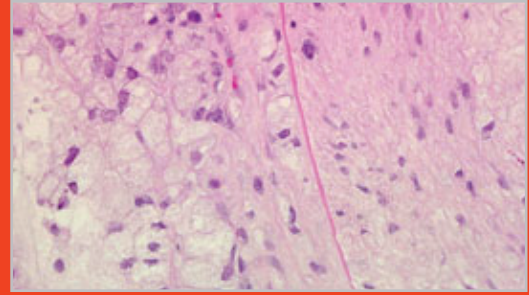
- Exceptional detail 2.1 million pixel HD sensor**
- 1920 x 1080 resolution of real time image**
- Accurate color reproduction**
- Preprogrammed for best brightfield color imaging**
- Live HD image adjusts quickly to magnification or scene change**
- No image smear, lag or jitter**
- Eliminates eye fatigue from repetitive eyepiece viewing**
- Enables collaborative diagnostics in group setting**
- Allows entire class to view a live image on monitor or DLP projector**
- 16x9 HD image fills the monitor screen**
- Easy to connect with standard DVI output**
- Standard "C" mount for simple connect**
- 1/3" optical coupler recommended for microscope**
- Dage-MTI service and support from industry leader**

**For more information call (219) 872-5514 or visit online.**

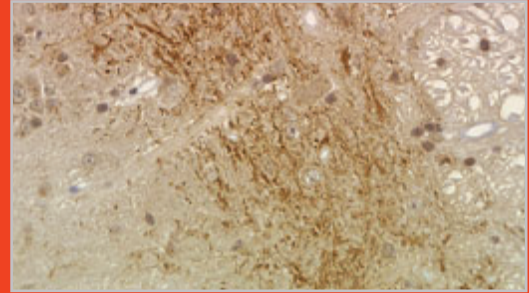
Call today for product specs, demo, or to place an order.

©2010 Dage-MTI, All Rights Reserved

Ideal solution for a review board, teaching setting, or other collaborative environments.



Sample Images from the RealView™ HD-210D



Sample Images from the RealView™ HD-210D

**Combine with the RealView™ Magic Box for an unparalleled imaging output system.**

**DAGE-MTI**

[www.dagemti.com](http://www.dagemti.com)

ADVANCED CAMERA TECHNOLOGY FOR SCIENTIFIC AND INDUSTRIAL APPLICATIONS