

DAGE-MTI

Advanced HD Microscope Cameras & Streaming Solutions

- ◆ Dage-MTI at a Glance
- ❑ HD-Stream
- ❑ HD-210U Camera
- ❑ HD-336U 3CMOS Camera
- ❑ 4K Ultra HD Camera
- ❑ IR-1000 Camera



Nate Jones

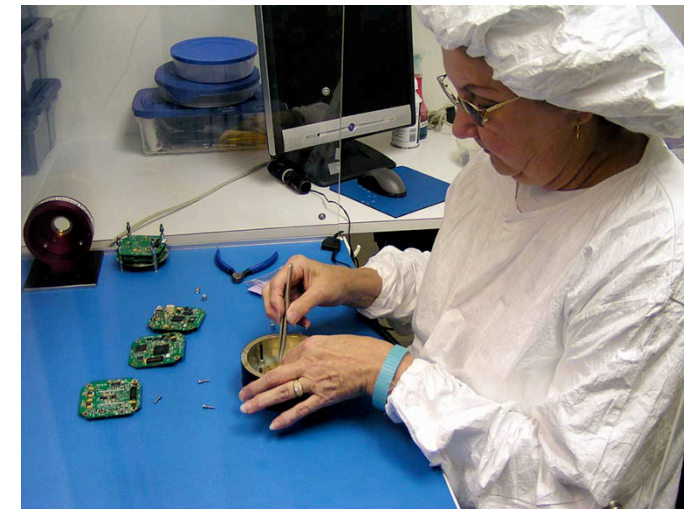
VP, Business Development

DAGE-MTI Live HD Imaging Solutions

- ❑ Dage-MTI is the oldest camera manufacturer in the United States (older than Kodak and RCA!)
- ❑ Our solutions are used in over 30 different countries and appear in some of the most advanced facilities in the world
 - ❑ USCAP Training Center, Johns Hopkins, The Mayo Clinic, Boston Scientific, Cleveland Clinic, Bosch, Kaiser Permanente, Lawrence Livermore National Labs, & more!
- ❑ Experts in providing the BEST live image for any application
- ❑ Headquartered in Michigan City, IN

“We strive to provide the most advanced imaging solutions with a focus on simplicity and ease of use. We want our solutions to fit into your lives, not the other way around”

– **Peggy Moore, President**



- ❑ Dage-MTI at a Glance
- ◆ HD-Stream
- ❑ HD-210U Camera
- ❑ HD-336U 3CMOS Camera
- ❑ 4K Ultra HD Camera
- ❑ IR-1000 Camera



Streaming Live HD Images Has Never Been Easier

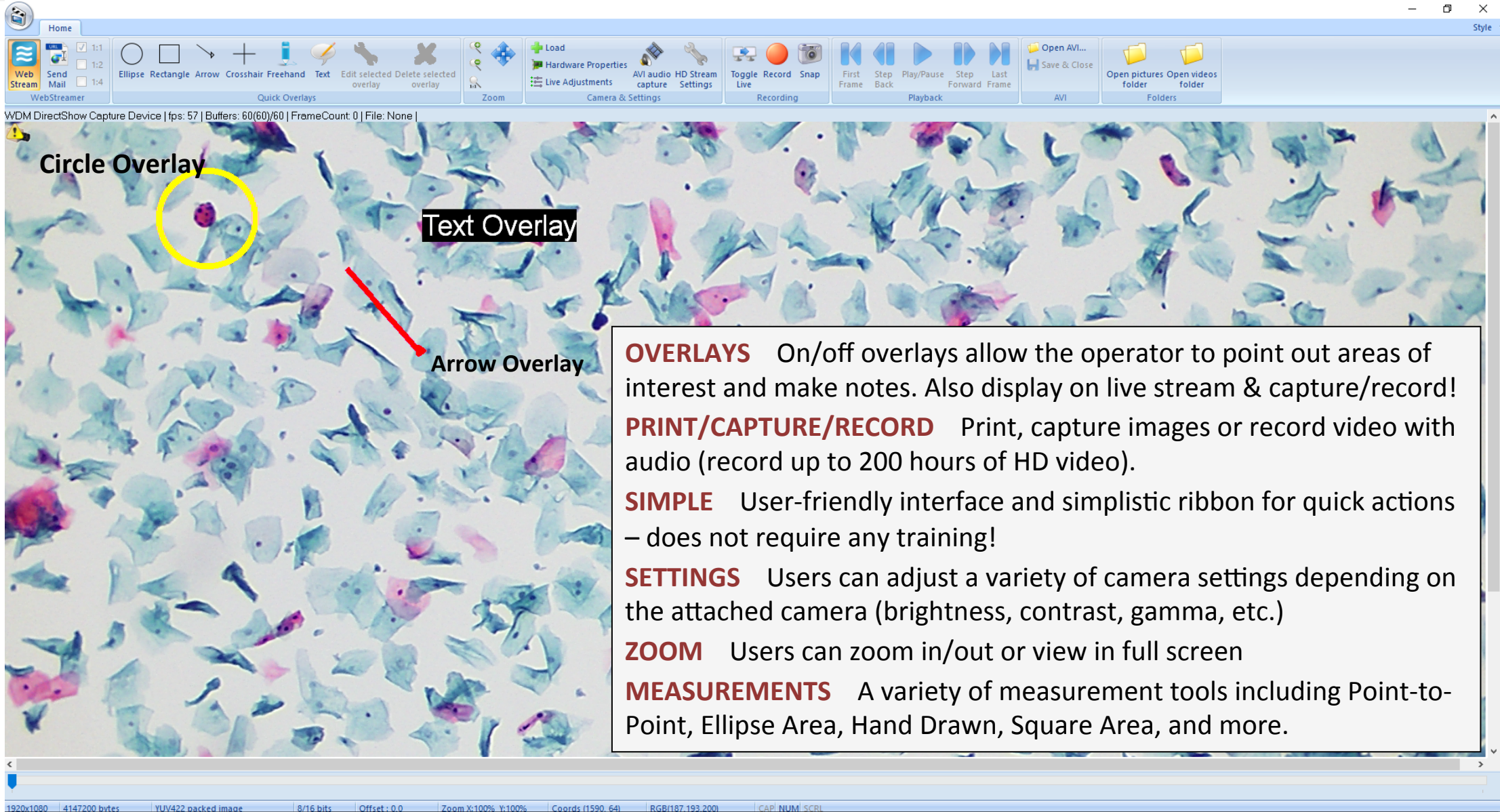
KEY FEATURES

- **Interface** - HD-Stream connects directly to a variety of qualified USB HD cameras for live display & streaming.
- **Platform Independent** - Stream live HD images simultaneously to PC, MAC, desktops, tablets or smartphones.
- **IT Friendly** - Connects directly to a network via wired Ethernet or Wi-Fi connection. No additional software downloads or reoccurring fees.
- **Secure** - HIPPA compliant. Encrypted transmission ensures no patient identifiable information is exchanged with transmission of live images. Customizable and password protected URL's.
- **Capture, Record & Print** - Record up to 200 hours of HD video (with audio) directly to the HD-Stream box or save video & images to an SD card or USB drive. Connects to any Windows compatible printer.
- **Powerful** - A single HD-Stream box can stream to 50 viewers (bandwidth dependent). Multiple boxes can be connected to stream to even larger numbers of viewers!



Application Examples

- MEDICAL
 - Tumor Board Review
 - FNA Carts
 - Remote Collaboration
- EDUCATIONAL
 - Classroom teaching
 - Remote instruction
- INDUSTRIAL
 - Remote Inspection



The screenshot displays the DAGE-MTI HD-STREAM software interface. The top ribbon contains various toolbars including 'Web Streamer', 'Quick Overlays' (with shapes like Ellipse, Rectangle, Arrow, Crosshair, Freehand, Text), 'Zoom', 'Camera & Settings', 'Recording', and 'Playback'. The main window shows a microscopy image of cells. Three overlays are highlighted: a yellow circle labeled 'Circle Overlay', a black text box labeled 'Text Overlay', and a red arrow labeled 'Arrow Overlay'. A status bar at the bottom provides technical details: '1920x1080', '4147200 bytes', 'YUV422 packed image', '8/16 bits', 'Offset: 0.0', 'Zoom X:100% Y:100%', 'Coords (1590, 64)', 'RGB(187,193,200)', and 'CAP NUM SCBL'.

OVERLAYS On/off overlays allow the operator to point out areas of interest and make notes. Also display on live stream & capture/record!

PRINT/CAPTURE/RECORD Print, capture images or record video with audio (record up to 200 hours of HD video).

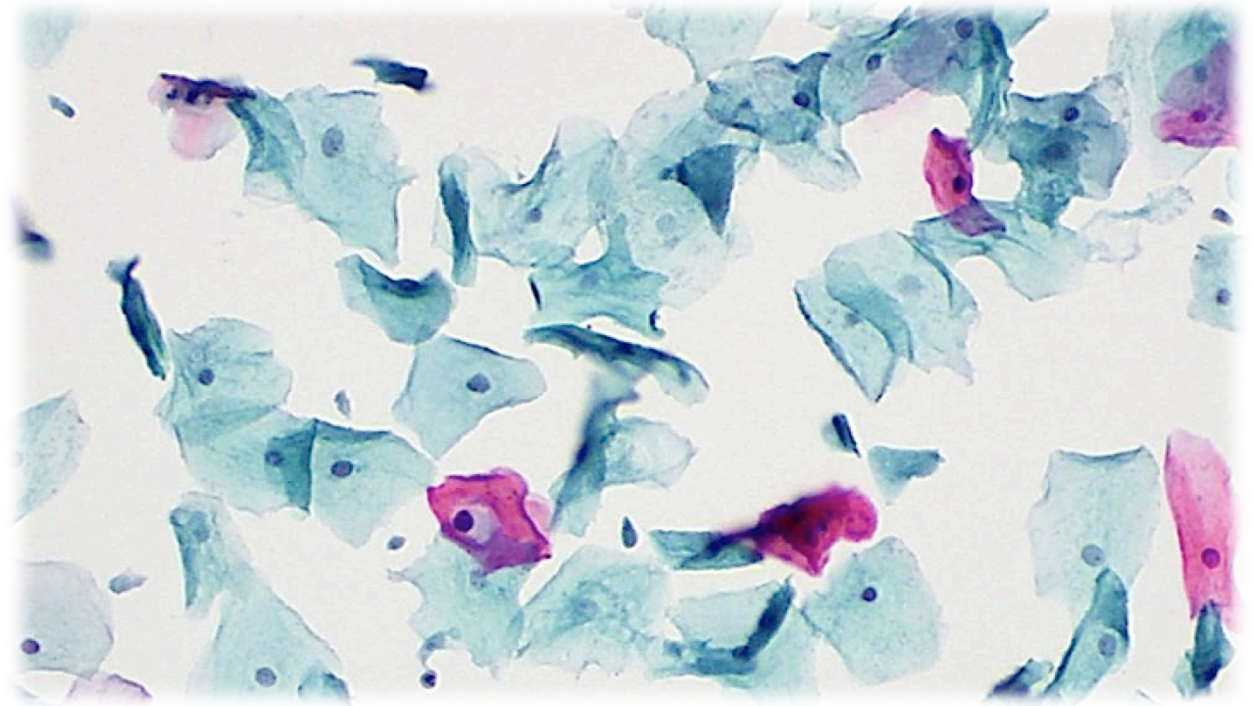
SIMPLE User-friendly interface and simplistic ribbon for quick actions – does not require any training!

SETTINGS Users can adjust a variety of camera settings depending on the attached camera (brightness, contrast, gamma, etc.)

ZOOM Users can zoom in/out or view in full screen

MEASUREMENTS A variety of measurement tools including Point-to-Point, Ellipse Area, Hand Drawn, Square Area, and more.

- ❑ Dage-MTI at a Glance
- ❑ HD-Stream
- ◆ HD-210U Camera
- ❑ HD-336U 3CMOS Camera
- ❑ 4K Ultra HD Camera
- ❑ IR-1000 Camera



Ideal for Viewing Live HD Images

KEY FEATURES

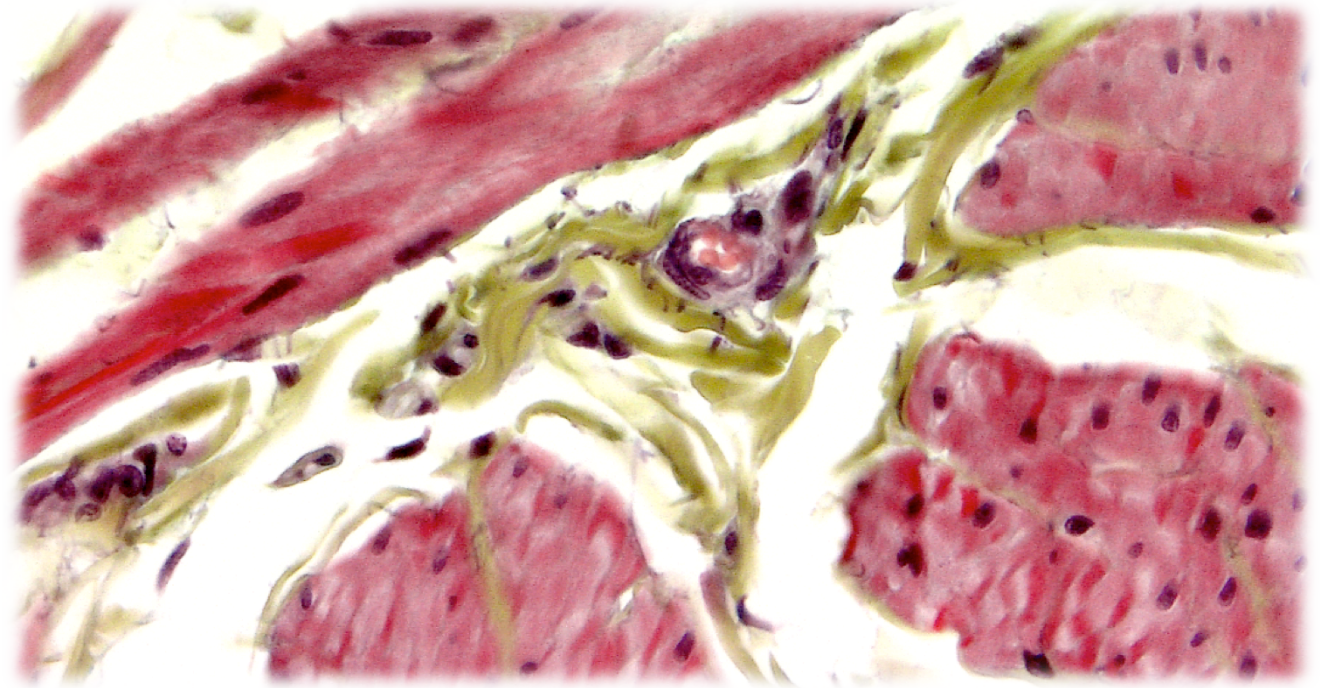
- Full high-definition (1080p) at 60fps live display
- DVI/HDMI output for viewing on a live display - HD monitor or projector!
- Simultaneous USB2 output connects to a CPU for simple image capture
- 1 button white balance auto-calibration
- 6 color accuracy (CMYRGB) instead of standard RGB
- No compression, stretching, black bars or cropping of the image
- Intuitive “MagicApp” software included for image capture



Application Examples

- MEDICAL
 - Tumor board reviews
 - Live cell imaging
 - Pathology/histology/cytology
- EDUCATIONAL
 - Class room demonstration
- INDUSTRIAL
 - Circuit board inspection
 - Defect analysis

- ❑ Dage-MTI at a Glance
- ❑ HD-Stream
- ❑ HD-210U Camera
- ◆ HD-336U 3CMOS Camera
- ❑ 4K Ultra HD Camera
- ❑ IR-1000 Camera



Brightfield & Fluorescence Imaging

KEY FEATURES

- Latest in 3-CMOS HD camera technology (1920 x 1080) – 1080p (60fps)
- The highest resolution 3-chip camera in the market
- DVI/HDMI output for viewing on a live display - HD monitor or projector!
- Simultaneous USB3 output connects to a CPU at 60fps
- Ideal for both live brightfield and live fluorescence imaging
- 12 color accuracy (CMYRGB) instead of standard RGB
- Intuitive “MagicApp” capture software included
- Medically certified version available
- *Featured at USCAP Interactive Training Facility in Palm Springs, CA (image below)*



Application Examples

- MEDICAL
 - Pathology
 - Surgical
 - Hematology
 - Fluorescence or brightfield
- EDUCATIONAL
 - Classroom teaching
 - Interactive instruction



- ❑ Dage-MTI at a Glance
- ❑ HD-Stream
- ❑ HD-210U Camera
- ❑ HD-336U 3CMOS Camera
- ◆ 4K Ultra HD Camera
- ❑ IR-1000 Camera



Small Details Come to Life

KEY FEATURES

- Ultra HD resolution (3840 x 2160) – 4 times more resolution than standard HD
- 60fps live display to monitor or projector
- Small objects come to life at low magnifications, such as 2x and 4x
- Digital noise reduction, shading correction, edge enhancement and auto white-balance
- 12 color accuracy (CMYRGB) instead of standard RGB
- Connects via HDMI, Display Port or 3G-HD/SDI (x4)
- ***Featured at USCAP Interactive Training Facility in Palm Springs, CA (image below)***

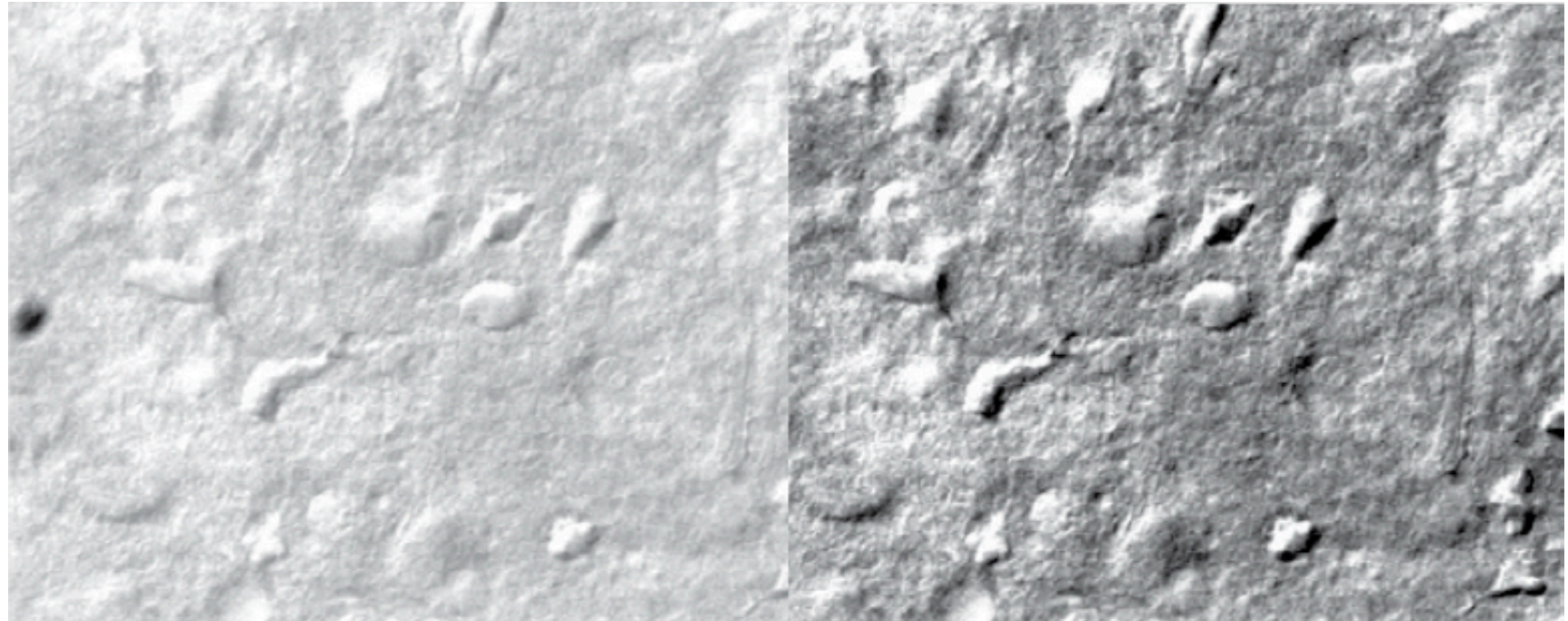


Application Examples

- MEDICAL
 - Ophthalmology
 - Pathology
 - Histology
 - Tumor board
 - Surgical
- INDUSTRIAL
 - Defect analysis
 - Circuit board inspection



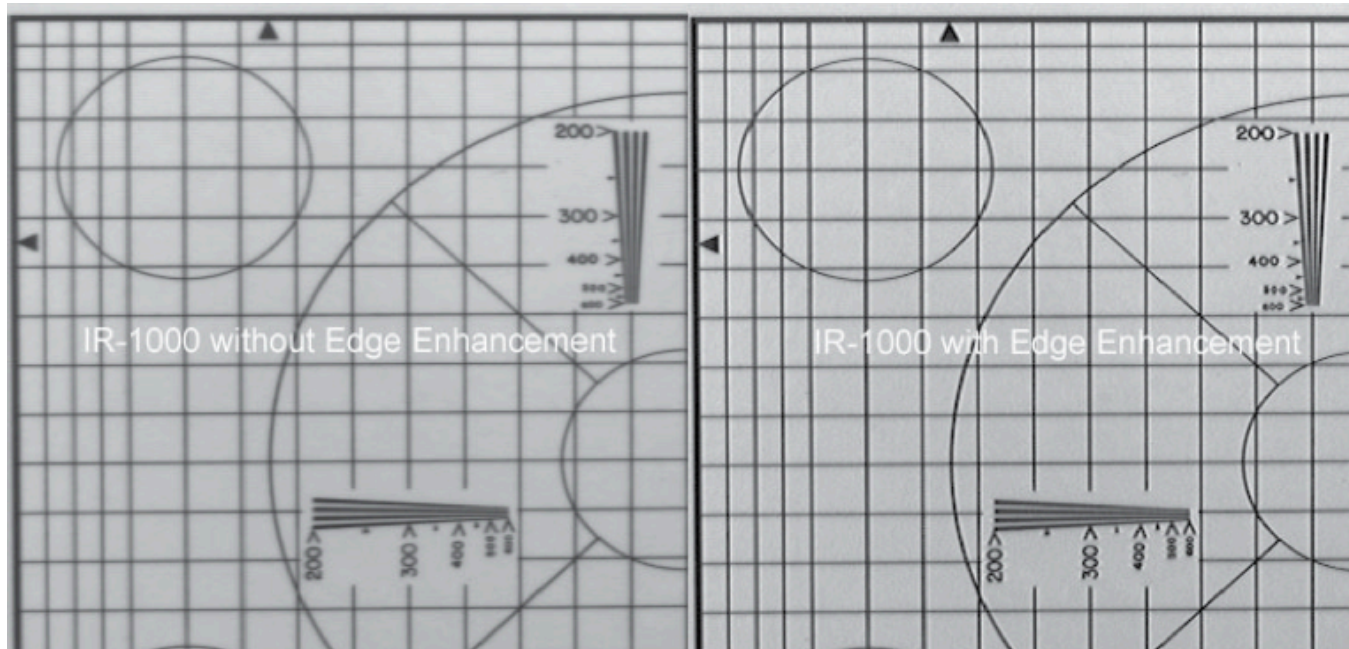
- ❑ Dage-MTI at a Glance
- ❑ HD-Stream
- ❑ HD-210U Camera
- ❑ HD-336U 3CMOS Camera
- ❑ 4K Ultra HD Camera
- ◆ IR-1000 Camera



Near Infrared in Real Time

KEY FEATURES

- Excellent sensitivity in near IR and entire visible spectrum
- Provides 5 times more sensitivity at 900 nm
- Live display at 30fps for true real-time viewing
- Electronics automatically readjust for optimum contrast
- Useful when changing magnification levels, specimens and/or lighting levels
- Real-time edge enhancement sharpens edge for clear imaging



Application Examples

- MEDICAL
 - Electrophysiology
 - Fluorescence microscopy
- INDUSTRIAL
 - Semiconductor inspection
 - Failure analysis
 - Quality control
- SCIENTIFIC
 - Forensic analysis

Connect With Us!

Dage-MTI | Live HD Imaging Solutions

Dage-MTI

701 N. Roeske Avenue
Michigan City, IN 46360

Phone: (219) 872-5514
Email: imagingexperts@dagemti.com



Nate Jones

VP, Business Development

Office: (219) 872-5514
Mobile: (219) 448-1777
Email: njones@dagemti.com

We look forward to supporting your imaging efforts!