

HD-336U 3 CMOS High Definition Camera

DAGE-MTI

SCIENTIFIC. MEDICAL. INDUSTRIAL

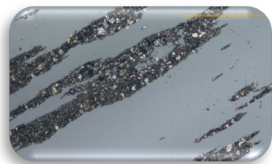
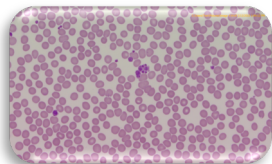
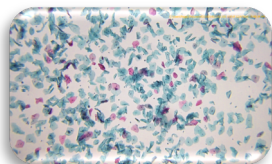
BRIGHTFIELD & FLUORESCENCE HD IMAGING

The advanced HD-336U is the ultimate 3CMOS HD microscopy camera for live brightfield AND fluorescence imaging. The HD-336U offers full high definition, 1080p streaming directly to a computer or HD display at 60 fps via simultaneous dual outputs. The HD-336U is ideal for applications requiring critical color reproduction, full HD resolution, and FAST live imaging.

- Superb HD images; 3-CMOS with full HD (1920 x 1080 on each sensor)
- Ideal for both brightfield and fluorescence imaging
- Critical YCMRGB color reproduction (6 color accuracy vs. RGB)
- MagicApp software (included) for image capture (Win XP (SP2-3)/Vista/7/8/)
- *FAST 60 FPS* live viewing to HD monitor or projector – no PC required
- Pixel-to-pixel HD matching for full screen display (16:9)
- No compression, stretching, black bars or cropping of image
- No smear, lag, or jitter with scene or magnification changes
- Automatically adjusts to changes in light sensitivity
- One click image capture (TIFF, JPEG, Bitmap, PNG)
- USB 3.0 computer connect @ fast 60 fps
- Simple One-Push Operation



Recommended Applications



PATHOLOGY

LIVE CELL IMAGING

CLASSROOM TEACHING

DERMATOPATHOLOGY

TUMOR BOARDS

OPHTHALMOLOGY-SLIT LAMPS

OPHTHALMIC MICROSCOPES

HEMATOLOGY

HISTOLOGY

CYTOPATHOLOGY

CLINICAL & INDUSTRIAL MICROSCOPY

NEURO-SURGICAL MICROSCOPES

DENTAL-SURGICAL MICROSCOPES

LIVE FLUORESCENCE IMAGING

BRIGHTFIELD

METROLOGY

HD-336U - SPECIFICATIONS

BRIGHTFIELD & FLUORESCENCE IMAGING

DAGE-MTI

Image Sensor:	3-CMOS, 1/3 inch color CMOS sensors, progressive
Output Pixels:	Horizontal: 1920, Vertical: 1080 (on each sensor)
Signal System:	1080/59.94p, 1080/50p, 1080/59.94i, 1080/50i, 720/59.94p, 720/50p
Sensitivity:	F10 Standard @ 59.94 Hz; F11 @ 50Hz (2000lx, 3000K)
Minimum Illumination:	4.8 lx (at 59.94Hz setting, F2.2, Gain +20dB, BINNING: ON) 4.0 lx (at 50Hz setting, F2.2, Gain +20dB, BINNING: ON) 9.6 lx (at 59.94Hz setting, F2.2, Gain +20dB, BINNING: OFF) 8.0 lx (at 50Hz setting, F2.2, Gain +20dB, BINNING: OFF)
Output Signal:	Simultaneous Live Outputs: DVI (Digital RGB) DVI-D terminal; USB 3.0 (60fps)
White Balance:	One-Push AWB (Auto White Balance); ATW (Auto Tracking); Manual
Gain:	Auto; Off; Manual (-15dB to 20dB)
Scene File:	A, B, C, D, E (user selectable)
Electronic Shutter:	Auto; SS; Manual (OFF, 1/100s – 1/10000s)
Controls:	Digital Noise Reduction; H&V Image Inversion, Shading Correct, Black Balance w/hot pixel mask; Edge Enhancement; Gamma; Binning On/Off
Interface:	Serial data interface (compliant with RS 232C)
Lens Mount:	C mount
Power Supply:	12VVDC, 2.5A, ~10.3W
Weight:	H: 70g / CCU: 600G (1.32lbs)
External Dimension:	H: 32.6 W x 38.6 H x 41 D mm / CCU: 110 W x 40 H x 186 D mm
Operating Temp:	0 °C to 40 °C (32° F to 104° F)
Operating Humidity:	Less than 90% (non condensing) / Ambient
Recommended PC:	OS: Windows 7 CPU: Pentium 4, 1.3 GHz or higher Memory: 512 MB or more USB Port: USB 3.0