

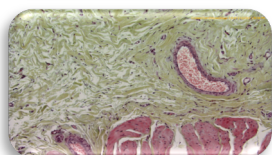
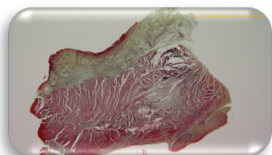
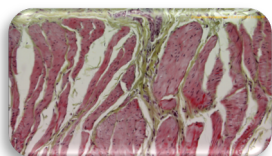
STUNNING DETAIL AND IMAGE CLARITY

The **UHD-4K** is the latest innovation in leading edge, advanced HD camera technology for live high definition imaging. The unparalleled **UHD-4K** camera offers full, *ultra* high definition, 3840 x 2160 output, at up to **60 fps!** Small features at low magnification that could not be resolved satisfactorily using other HD cameras now provides stunning detail & image clarity.

- Full **Ultra HD** 3840 x 2160 Resolution
- Unprecedented YCGMRB Color Reproduction (6 Color Accuracy vs RGB)
- **FAST 60 fps** Live Viewing – No PC Required
- Razor Sharp Images at Low (2x & 4x) Magnification
- No Compression, Stretching, Black Bars or Cropping of Image
- No Smear, Lag, or Jitter with Scene or Magnification Changes
- Automatically Adjusts to Changes in Light Intensity
- Pixel-to-Pixel HD Matching for Full Screen Display
- Simple One-Push Operation
- First **Ultra HD** 4K Camera for Microscopy
- Freeze/Hold for Immediate Image Review
- Unique Controls for Superior Image Quality



Recommended Applications



PATHOLOGY

LIVE CELL IMAGING

CLASSROOM TEACHING

DERMATOPATHOLOGY

TUMOR BOARDS

OPHTHALMOLOGY-SLIT LAMPS

OPHTHALMIC MICROSCOPES

HEMATOLOGY

HISTOLOGY

CYTOPATHOLOGY

CLINICAL & INDUSTRIAL MICROSCOPY

NEURO-SURGICAL MICROSCOPES

DENTAL-SURGICAL MICROSCOPES

SEMICONDUCTOR INSPECTION

DEFECT ANALYSIS

METROLOGY

UHD-4K SPECIFICATIONS

DAGE-MTI

STUNNING DETAIL & IMAGE CLARITY

Image Sensor:	3-CMOS HD Micro Prism, 1/3 inch Color CMOS Sensors, Progressive
Output Pixels:	Horizontal: 3840, Vertical: 2160 UHD 4K mode Horizontal: 1920, Vertical: 1080 HD 1080p/1080i modes
Signal System:	H: 67.433 kHz, V: 59.94 1080p/59.94Hz(4K/59.94 Hz 4 division output) H: 56.250 kHz, V: 50Hz: 1080p/50 Hz (4K/59.94 Hz 4 division output) H: 33.716 kHz, V: 59.94 Hz: 1080i/59.94Hz H: 28.125 kHz, V: 50 Hz: 1080i/50Hz
Sensitivity:	F5.6 Standard @ 59.94 Hz; F6.1 @ 50Hz (2000lx, 3000K)
Color Matrix:	R, R-Ye, Ye, Ye-G, G, G-Cy, Cy, Cy-B, B, B-Mg, Mg, Mg-R (12 hue/gain adjustment)
Minimum Illumination:	19.5 lx (59.94 Hz setting); 16.2 lx (50 Hz); @ F2.2, 24dB
S/N Ratio:	58 dB standard
Output Signal:	4x 3G/HD-SDI (60fps) Optional: Display Port Converter (60fps); HDMI Converter (30fps)
White Balance:	One-Push AWB (Auto White Balance); ATW (Auto Tracking); Manual
Gain:	Auto; Off; Manual (-6dB to 24dB)
Scene File:	A, B, C, D, E (user selectable)
Electronic Shutter:	Auto; SS; Manual (OFF, 1/60s – 1/10,000s)
Controls:	Digital Noise Reduction; H&V Image Inversion, Shading Correct, Black Balance w/hot pixel mask; Edge Enhancement; Gamma; Freeze Frame
Interface:	Serial Data Interface (Compliant with RS 232C)
Lens Mount:	C Mount
Power Supply:	12VDC, 2.5A, ~10.3W (60601 compliant power supply available)
Weight:	H: 70g (2.5oz) / CCU: 800G (1.76lbs)
External Dimension:	H: 32.6 W x 38.6 H x 41 D mm / CCU: 110 W x 40 H x 186 D mm
Operating Temp:	0 °C to 40 °C (32° F to 104° F)
Operating Humidity:	Less than 90% (Non-Condensing) / Ambient