

HD-210U High Definition Camera

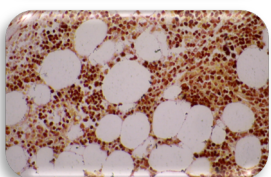
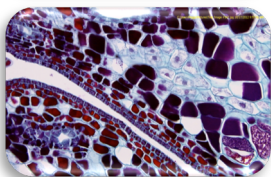
DAGE-MTI

SCIENTIFIC. MEDICAL. INDUSTRIAL

ALL-IN-ONE HD VIDEO DISPLAY & CAPTURE

The **HD-210U** is an innovative brightfield microscopy camera designed for maximum flexibility and ease of use. The **HD-210U** offers full, high definition 1080p60 HDMI streaming with superb color reproduction as well as USB2 connectivity for simultaneous live viewing & image capture.

- Full High Definition Imaging (1920 x 1080) with CMOS Sensor
- Exceptional YCGMRB Color Reproduction (6 Color Accuracy vs RGB)
- **FAST 60 FPS** Live Viewing to HD Monitor or Projector (no PC required)
- No Smear, Lag or Jitter with Scene or Magnification Changes
- Pixel-to-Pixel HD Matching for Full Screen Display (16:9)
- MagicApp Software (Included) for Image Capture (Win XP (SP2-3)/Vista/7/8/)
- One Click Image Capture & Instantaneous Review (TIFF, JPEG, Bitmap, PNG)
- No Compression, Stretching, Black Bars or Cropping of Image
- Automatically Adjusts to Changes in Light Sensitivity
- USB 2.0 Computer Connect for Image Capture
- Simple One-Push Operation



Recommended Applications

PATHOLOGY

VETERINARY PATHOLOGY

DEFECT ANALYSIS

LIVE CELL IMAGING

METROLOGY

BRIGHTFIELD

LAB PRACTICALS

ALLIED HEALTH

EDUCATION

TUMOR BOARDS

CLASSROOM DEMONSTRATIONS

SEMICONDUCTOR INSPECTION

LIVE DISSECTIONS OF ANIMALS

CLINICAL & INDUSTRIAL MICROSCOPY

HD-210U SPECIFICATIONS

DAGE-MTI

ALL-IN-ONE HD VIDEO DISPLAY & CAPTURE

Image Sensor:	1/3 inch Color CMOS Sensor, 2.1 megapixel
Output Pixels:	Horizontal: 1920, Vertical: 1080
Signal System:	1080/59.94p, 1080/50p, 1080/59.94i, 1080/50i, 720/59.94p, 720/50p
Sensitivity:	F 4 standard (2000 lx, 3000k)
Minimum Illumination:	8 lx standard (50 IRE, F1.4 gain + 18 dB, Gamma setting ON (setting value 0), 3000K)
Output Signal:	Simultaneous Live Outputs: DVI (Digital RGB) DVI-D terminal; USB Video Class 1.1 mini USB terminal (in conformity with USB 2.0)
White Balance:	One-Push AWB (Auto White Balance); ATW (Auto tracking), Manual
Gain:	Fully automatic control; Manual (0dB – 18dB)
Scene File:	Scene File A: Programmed for perfect color Scene File B: Programmed for perfect color with increased contrast Scene File C: Programmed for perfect color with extreme contrast Scene File D & E: User programmable
Lens Mount:	C Mount
Electronic Shutter:	Auto; Manual; SS (1/100s – 1/4000s)
Power Supply:	12VDC, 2.5A, ~4.1W
Weight:	148g (0.326 lbs)
External Dimension:	44(W) x 44(H) x 78(D) mm (1.73”(W) x 1.73”(H) x 3.07”(D))
Operating Temp:	0 °C to 40 °C (32° F to 104° F)
Operating Humidity:	Less than 90% (non condensing)/Ambient
Recommended PC:	OS: Windows® XP, Vista, 7,8, 32 and 64-bit CPU: Pentium® 4, 1.3 GHz or higher Memory: 512 MB or more

**Design and specifications are subject to change without notice*