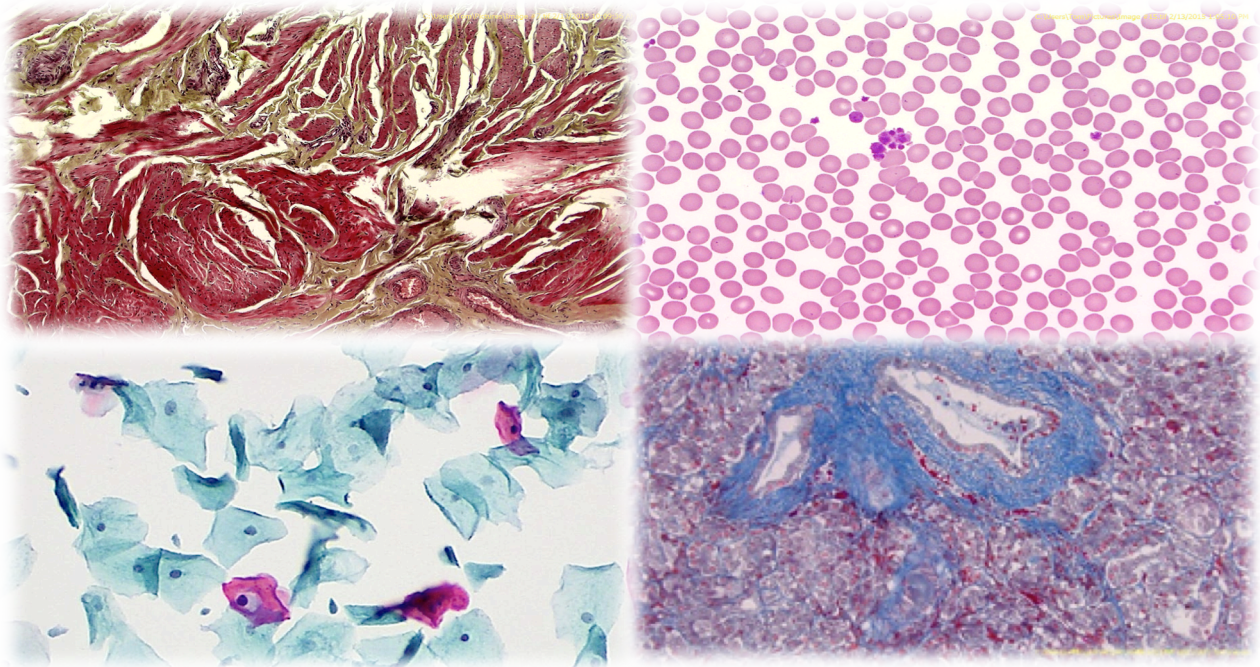


## UNMATCHED QUALITY AND SIMPLICITY

The NEW **HD-310U** video camera is a game-changer for live imaging applications. This compact camera packs all the features you need, including HDMI and USB 3.0 outputs that can be viewed simultaneously at 60fps. The progressive-scan color CMOS sensor provides increased sensitivity to display impeccably clear images for any application. The simplistic MagicApp image capture software enables users to snap images with the click of a mouse. This is true real-time live imaging!

- HDMI 1080p / 1080i output at 60fps
- USB 3.0 1080p output at 60fps
- USB & HDMI outputs can be viewed simultaneously
- Factory programmed to display best possible image
- Exceptional color reproduction - 12-color channel matrix
- Automatically adjusts to changes in light sensitivity
- MagicApp software included for live image capture
- Plug-and-play camera that DOES NOT require training



**Pathology**

**Microscopy**

**Tumor Board Review**

**Classroom Demonstrations**

**Semiconductor Inspection**

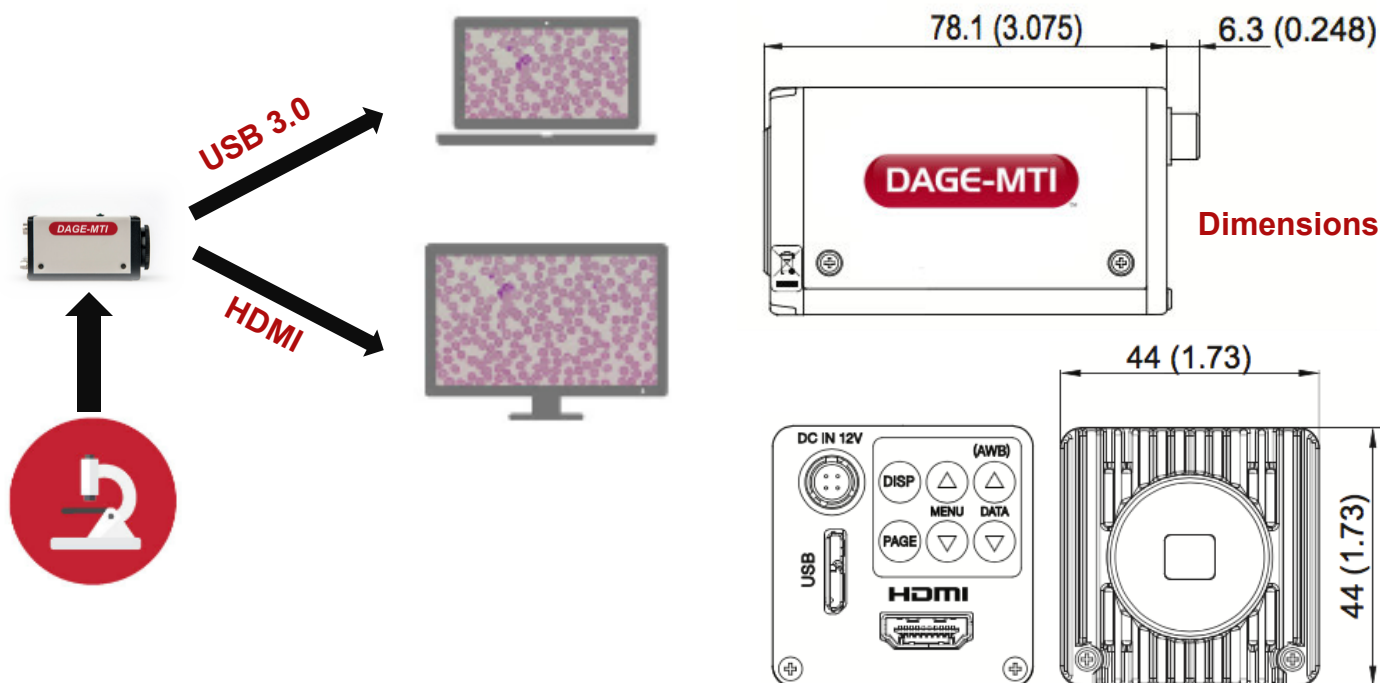
**Brightfield**

**Live Cell Imaging**

**Metrology**

**Scientific Imaging**

## UNMATCHED QUALITY AND SIMPLICITY



### HD-310U CAMERA - SPECIFICATIONS

|                              |   |
|------------------------------|---|
| Image Sensor:                | 1/2.8 inch color CMOS (progressive scan, rolling shutter)   |
| Resolution:                  | 1920 x 1080   |
| Output Signal:               | USB 3.0 (UVC1.1 compliant YUV3:2:2 : USB 3.1 Gen1)<br>HDMI 1.4a 4:4:4 : 1920 x 1080 (59.94Hz)<br>1920 x 1080 – 60fps (USB 3.0)<br>1920 x 1080 – 10fps (USB 2.0) |
| Sensitivity:                 | F10 standard (2000lx, 3100k, gain OFF, gamma OFF, 59,94Hz)<br>F11 standard (2000lx, 3100K, gain +2-dB, gamma OFF, 50Hz)   |
| Power:                       | DC 12V 10%, power consumption approx. 4.5W  |
| Lens Mount:                  | C-mount   |
| Coupler:                     | 0.35X microscope coupler recommended  |
| Dimensions:                  | Camera: 29mm x 29mm 43mm<br>Controller: 4.5 x 4.4 x 2.0" / 114.3 x 111.8 x 50.8mm   |
| Operating Temperature:       | -0° C to 40° C  |
| Operating Humidity:          | 90° or less (non-condensing)  |
| Minimum PC:                  | Windows 8, 10 (32 & 64 bit)   |
| Gain:                        | Auto / Manual : 0 ~ 20db / Off  |
| White Balance:               | AWB (Automatic White Balance) / Manual  |
| Shutter:                     | Auto / Manual (Off ~ 1/1000s)   |
| Image Optimization Function: | MATRIX color correction (12 colors), gamma correction, detail gain, master pedestal chroma gain setting, knee correction  |
| Special Function:            | Flip / mirror, digital crosshair lines  |

*\*Design and specifications are subject to change without notice*